

GUIDE

www.logiqboard.com



Creative, Interactive, Collaborative
Real-time chessboard editor

This manual provides a comprehensive guide to using LogiqBoard as a collaborative teaching and learning platform.

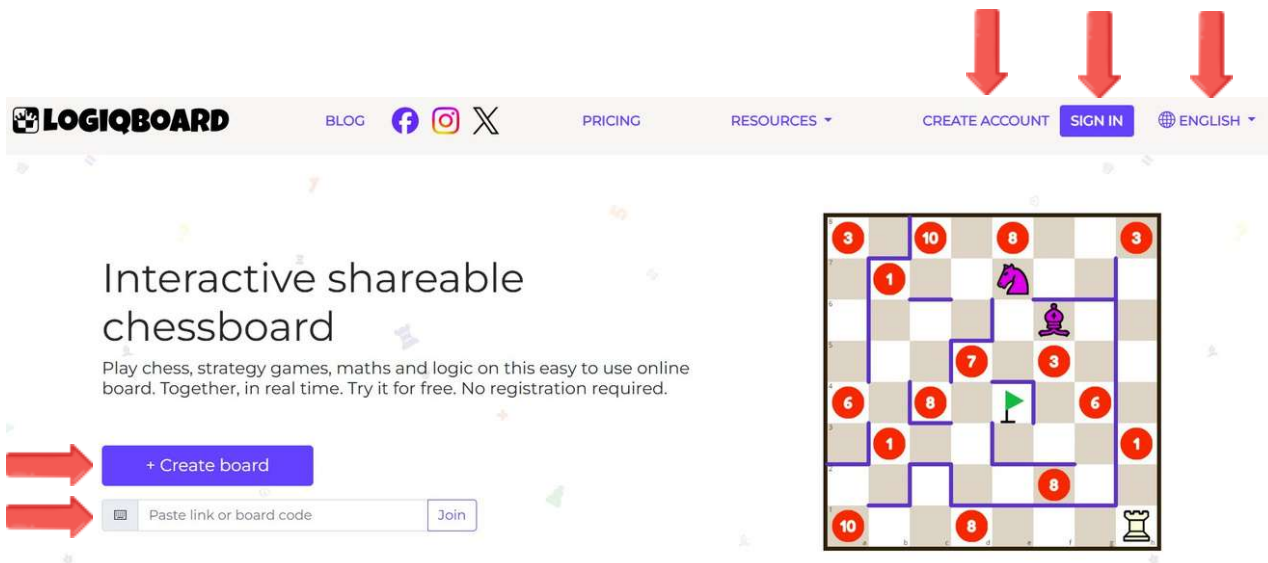


Table of Contents

Introduction	Introduction
• Getting Started -----	4
• Pricing -----	5
• Platform Overview -----	6
• Interface Layout -----	6
• Creating a New Board -----	7
• Sharing and Joining an Existing Board -----	8
• Collaboration and Real-Time Interaction -----	8
-	9
• Top bar -----	9
• Board name -----	9-10
• Breakout Boards -----	11
◦ Breakout Boards Memory -----	12
• Pieces Panel -----	13
• Central Board -----	13
◦ Drag and Drop -----	13
◦ Removing Elements -----	13
◦ Layer system -----	14
• History and Navigation -----	14
• Board Size Adjustment -----	15
• Board orientation (Flip Board) -----	15
• Play mode -----	16
◦ Free -----	16
◦ Relaxed -----	17
◦ Strict -----	18
▪ Visual Annotations in Strict Mode -----	19
• Navigation on the Timeline -----	20
• Tools Panel -----	21
◦ Numbers, letters and text -----	22
◦ Arrows and lines -----	
Menu System	Menu System
	23
• Load position -----	23
• Save position -----	24
• Export image -----	24-25
• Board settings -----	26
◦ Board notes -----	27
◦ Flip board & Board orientation -----	28
• Chess starting position -----	28
• Games -----	29
• My library -----	29
• Shareable, printable Worksheets -----	

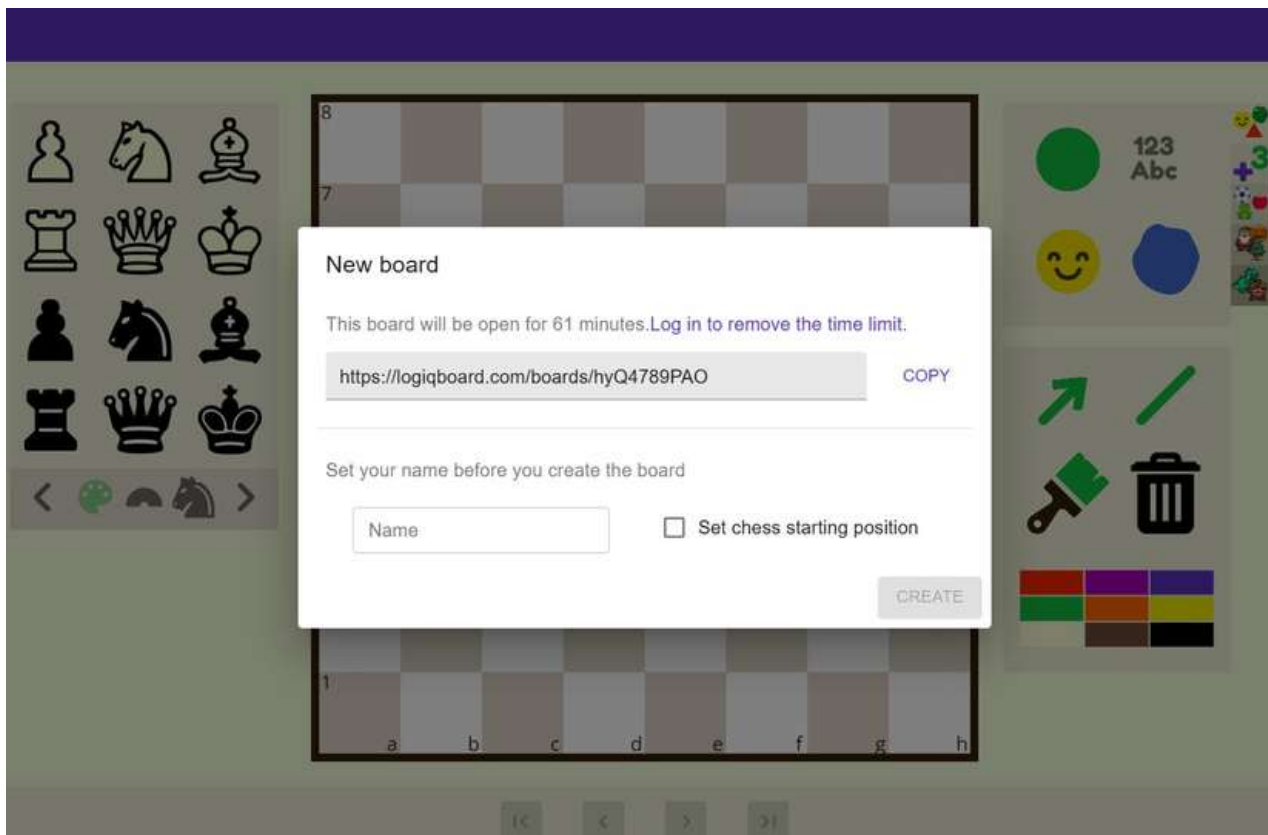
Getting started

Create an account, sign in and choose your language.




You can also create or join a board in seconds without signing in.

Without signing in, your board that you create will expire in 60 minutes.




Pricing


2 month free with annual plan


Annual plan 2 months free

<p>Guest Always free</p> <p><small>Ideal for students and casual users. Explore and evaluate Logiqboard, play chess and custom strategy games online. No registration needed.</small></p>	<p>Educator €7.00/month</p> <p><small>Ideal for teachers. Use it in the classroom as a demonstration board, or online as a real-time shared chessboard.</small></p> <p>Free trial</p>
--	--

Custom board design	✓	✓
70+ unique board elements	✓	✓
Export board images	Watermark	✓
Maximum daily boards	2	Unlimited
Board duration	60 minutes	Unlimited
Create, print, manage Worksheets	No Library access	
Ready-Made Classroom Worksheets		
Breakout Boards		
Store Boards and Positions		
Priority support	✓	✓

Interested?

Start Free Trial

To activate the free trial, users are required to create an account. The free trial provides full access to all platform features for one month. No credit card is required to start the trial.



Create new account

Create Account

Already have an account? [Sign in](#)



Platform Overview

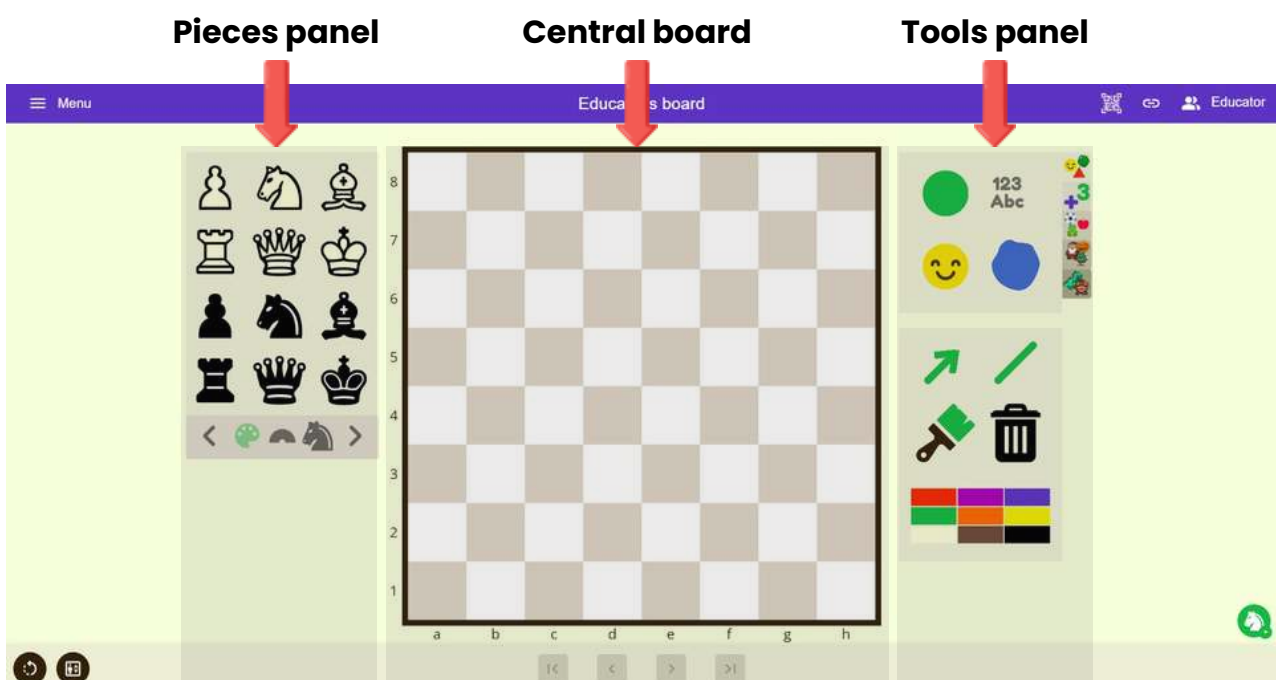
LogiqBoard is a browser-based interactive board designed to support dynamic, visual learning environments. Unlike static diagrams, it enables users to manipulate pieces, annotate positions, highlight key areas, and collaborate in real time. The platform is developed for educational contexts, allowing teachers and learners to actively engage with content through interactive exploration.

Boards update in real time for all participants, so teachers can demonstrate positions, puzzles or games. Perfect for classrooms and online teaching:

- Drag and drop pieces, symbols and visual elements instantly
- Create positions and puzzles on the fly
- Export high-quality images with one click

Interface Layout

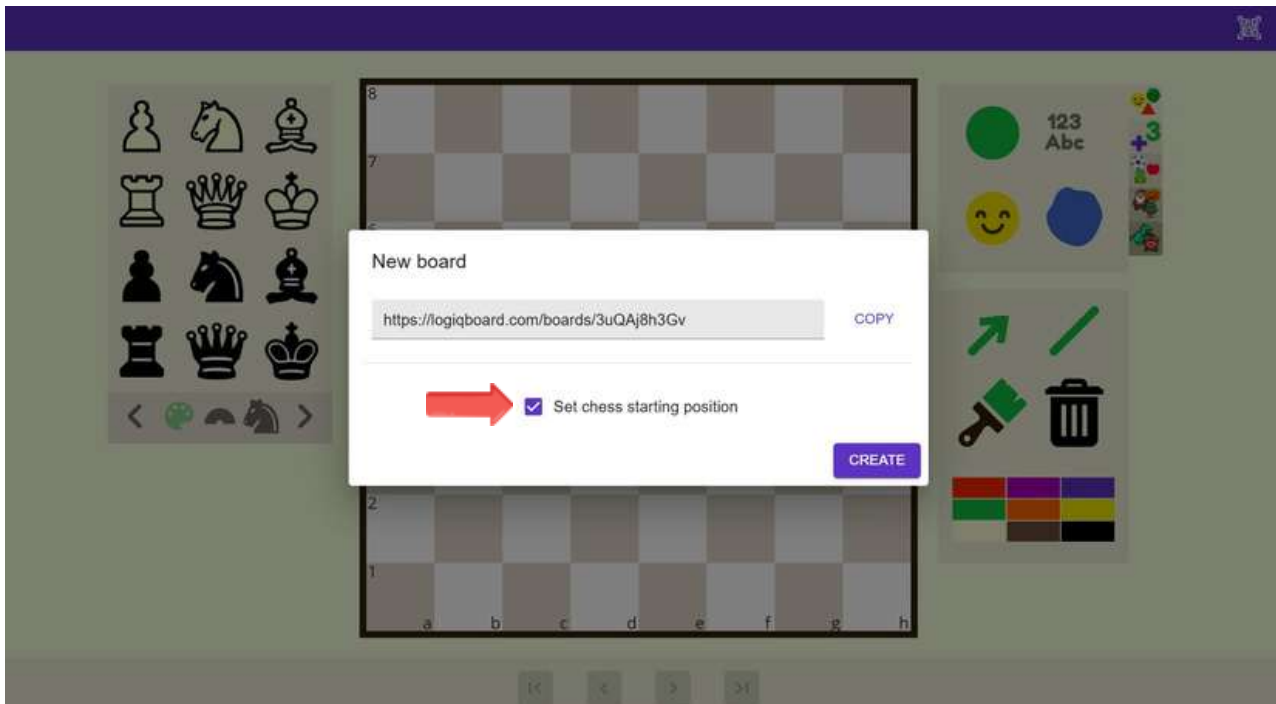
The interface is organised around a central board workspace surrounded by control panels. Understanding this layout is essential before exploring the individual tools. The central board is the main interactive surface. The left panel contains pieces that can be dragged onto the board. The right panel contains drawing and annotation tools used to explain ideas visually. At the top of the screen, a menu bar controls board management and collaboration features.



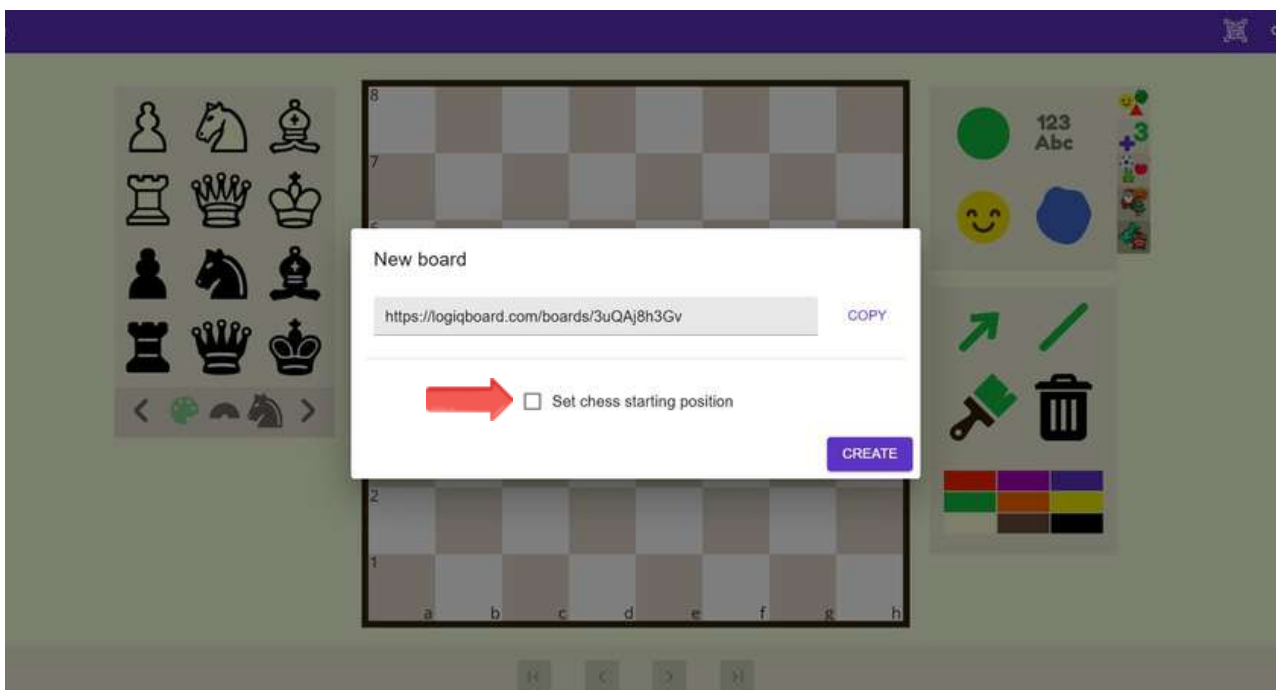
Creating a New Board

To begin using LogiqBoard without registration, a user typically creates a new board session. Opening the website presents two primary options: create a new board or join an existing board. Selecting Create Board opens a new interactive workspace and automatically generates a unique URL. This link serves as the access point for collaboration, allowing others to join the same board.

With the starting position



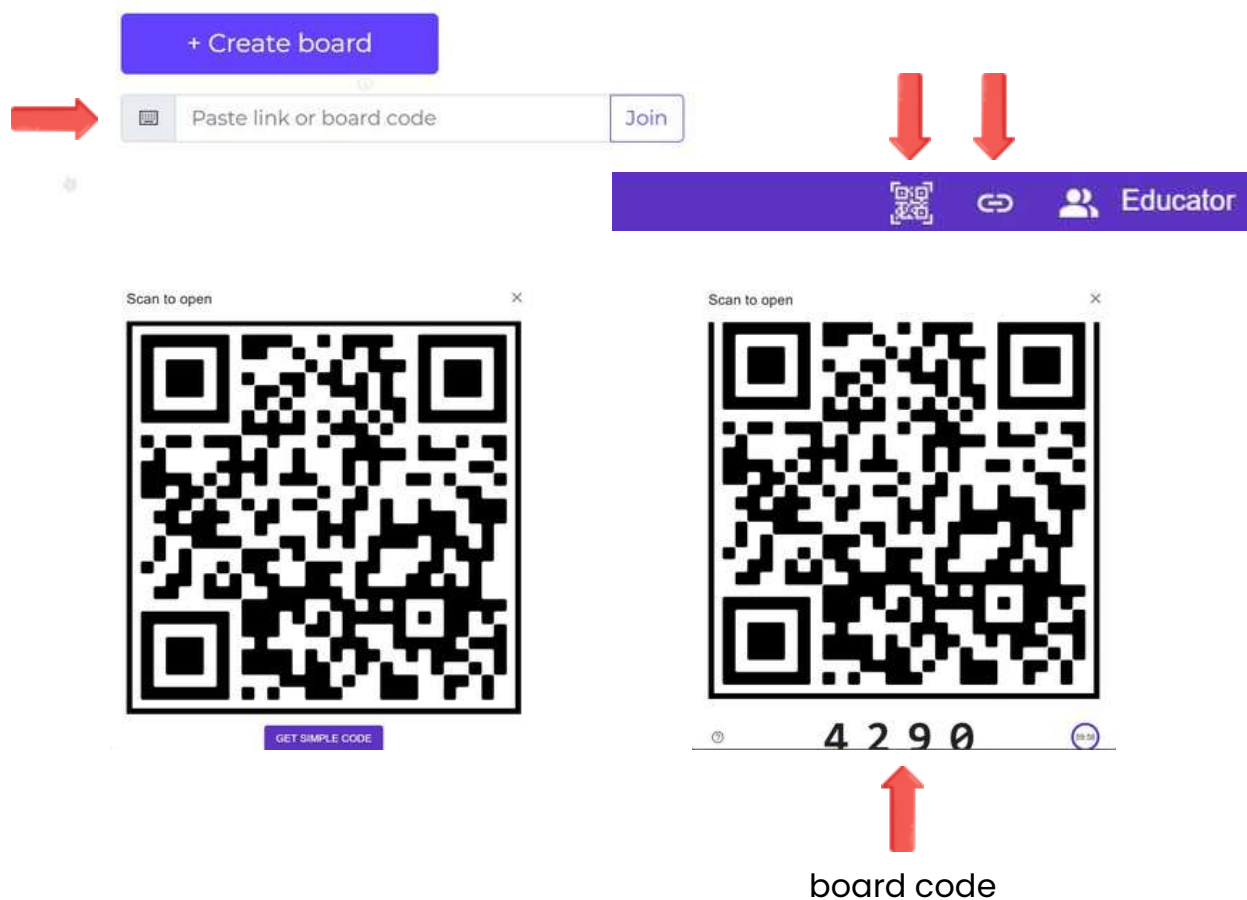
Without the starting position



Sharing and Joining an Existing Board

Each board has a unique URL and a QR code that can be shared with others to join the same board. QR codes can also be shared using a simple four-digit code. Enter the link or the four-digit code in the “Paste link or board code” section on the home page.

Sharing is one of the most powerful features of LogiqBoard. A single board link connects all participants to the same interactive workspace. Any change made by any participant appears instantly on all screens. Teachers use this feature to demonstrate educational tasks and invite students to interact and engage simultaneously on the shared board.



Collaboration and Real-Time Interaction

The board updates live for all participants. Multiple users can:

- move pieces
- drag and drop elements
- annotate positions
- solve puzzles together
- play games with each other




Top Bar

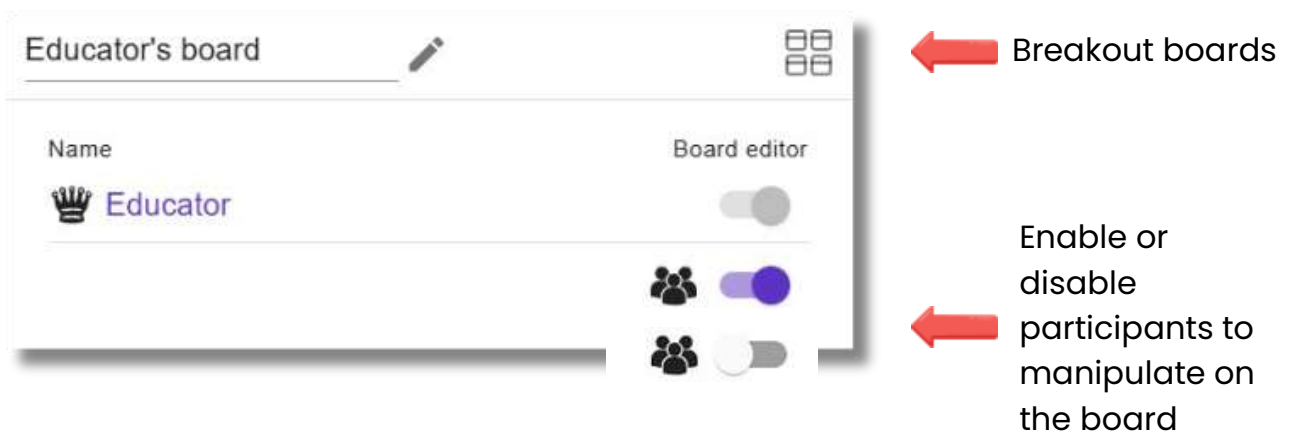


The top bar contains the main controls for managing the board:

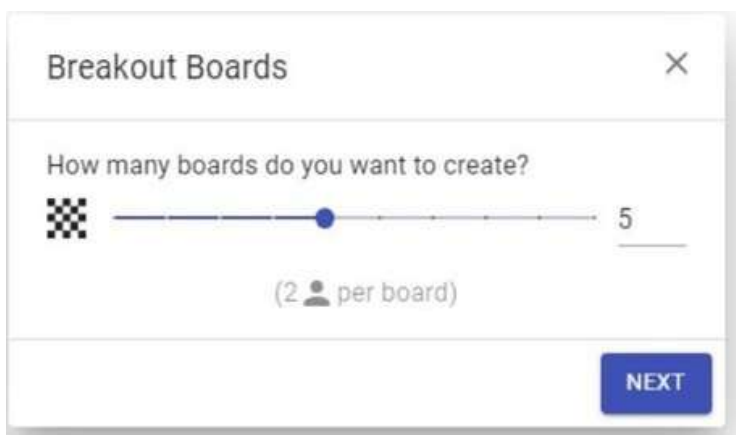
- menu system
- board name
- QR code (for sharing)
- URL link (for sharing)
- user's name
- breakout boards (participant list)

Board Name

The board name is displayed in the middle of the top menu bar. Selecting this or clicking the Participants  icon, opens the Board Settings dialogue, where users can view board information and modify settings. From this panel, the board can be renamed by the user (owner of the board).




Breakout Boards



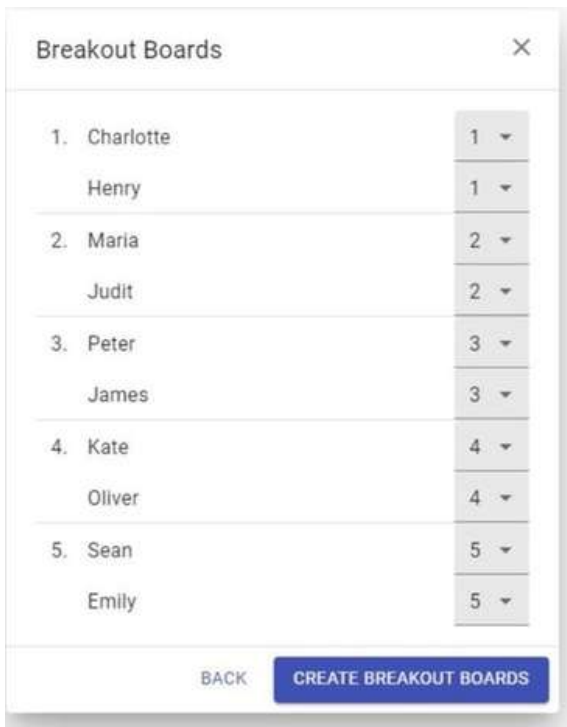
Once you have created a board and your students have joined, you can organise them into pairs or groups using the Breakout Boards feature. They can also work individually on separate breakout boards.



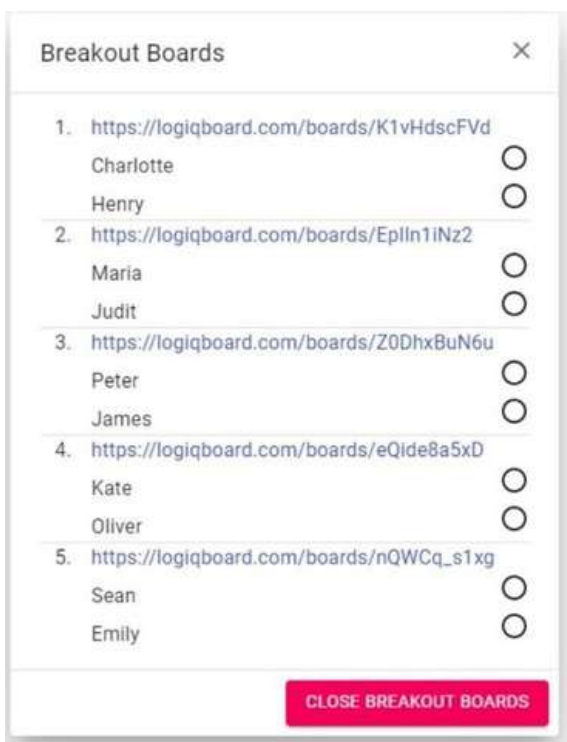
Breakout Boards

To organise participants into pairs or groups, open the participant list by clicking the Participants  icon in the top-right corner of the screen.

From the participant panel, select Breakout Boards to begin assigning students to separate boards for group work.



- Students can be reassigned at any time by changing the board numbers displayed next to their names on the right-hand side of the panel.
- Once the groups are set, click *Create Breakout Boards* to generate the separate board sessions.
- Each student will receive a notification asking them to join their assigned breakout board.

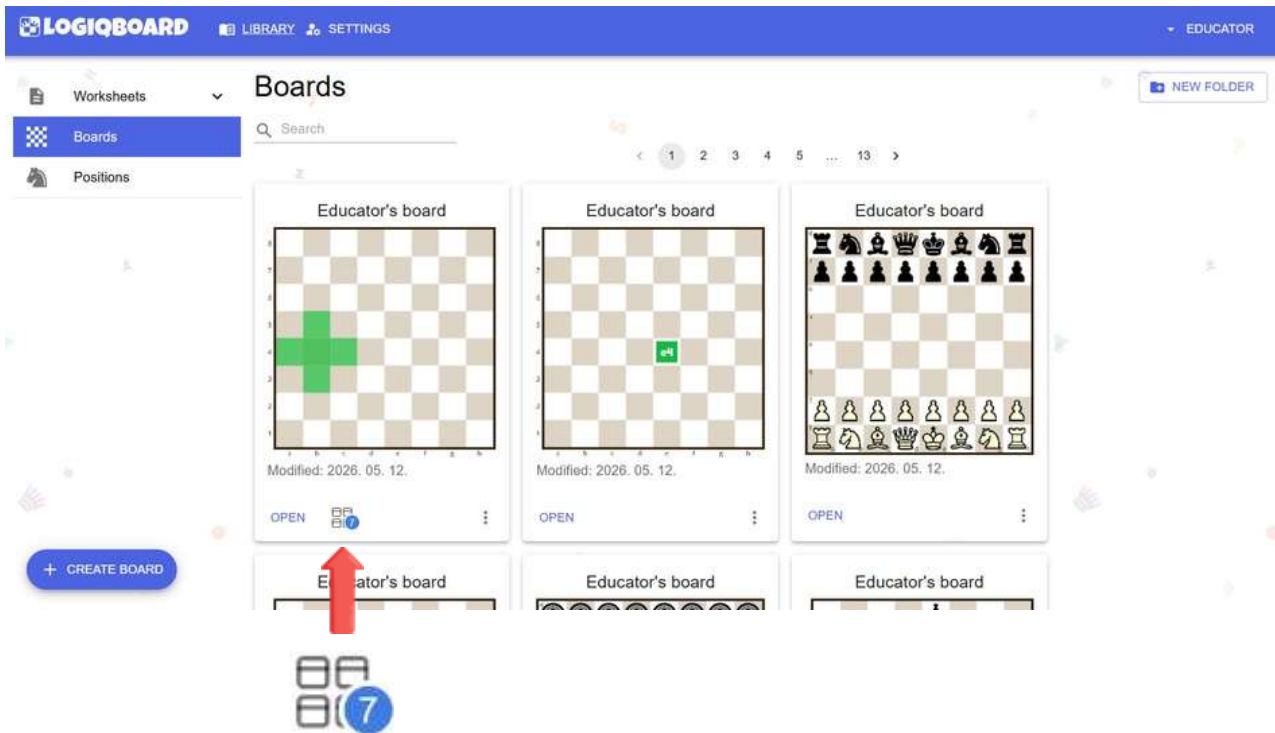


- Within the participant list, an indicator shows which students have accepted their breakout board invitation.
- Use the provided links to join any breakout board and monitor group progress in real time.
- To end the activity, click *Close Breakout Boards*. This sends a notification to all students, prompting them to leave their breakout sessions and return to the main board.



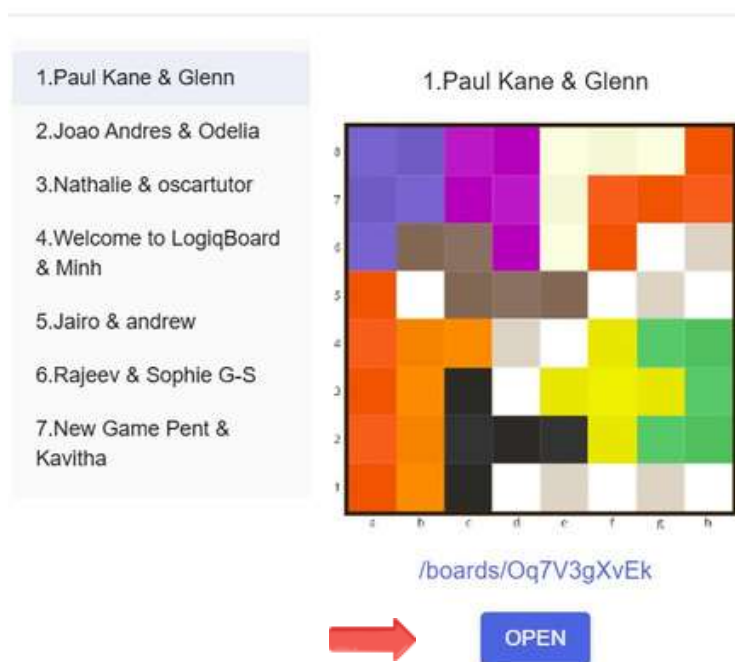
Breakout Boards Memory

The motherboard (main board) used to create breakout boards retains a record of those breakout sessions, even after the breakout boards have been closed. This allows the original board to maintain the breakout board structure and related session information for future reference or continued use.



Breakout Boards

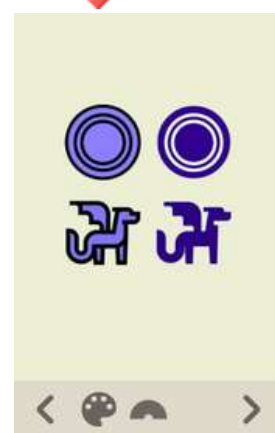
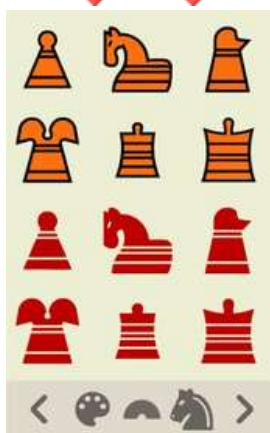
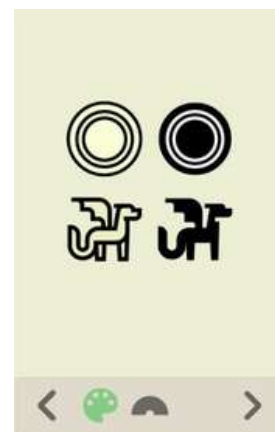
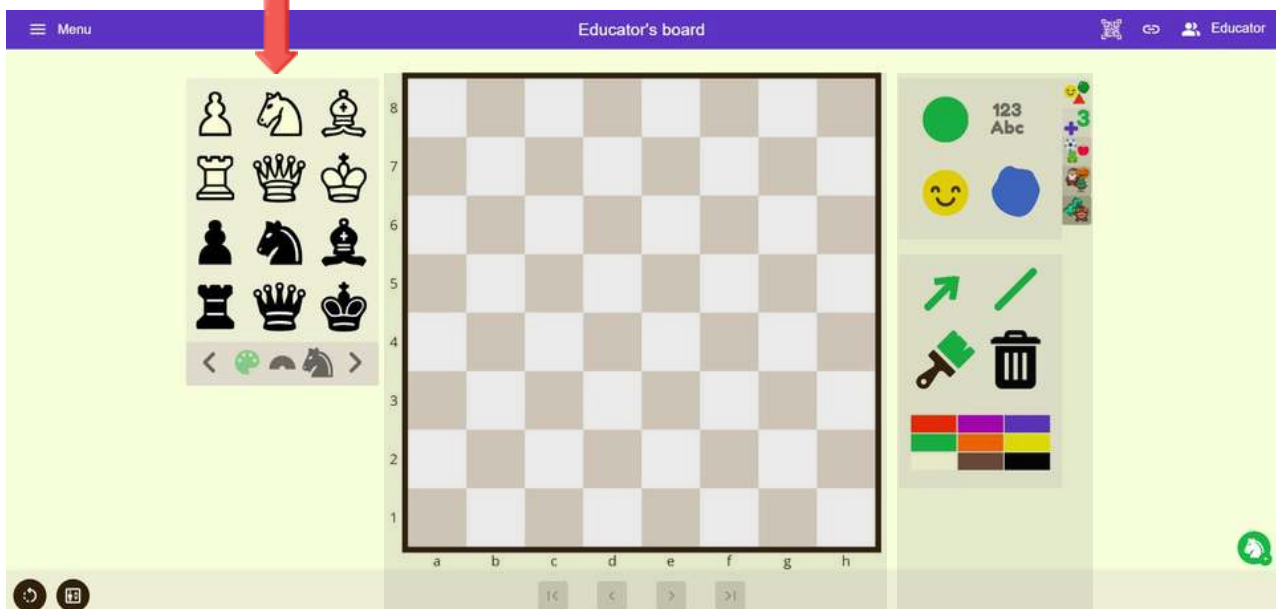
The number displayed in blue next to the Breakout Boards icon indicates how many breakout boards have been created from the main board in the last session. By clicking the icon, you can revisit each breakout board and review the work completed by students.



Pieces Panel

The left panel contains piece elements that can be dragged onto the board. Users can switch between different colours (use the colour palette and the rainbow icon), chess piece styles and checkers.

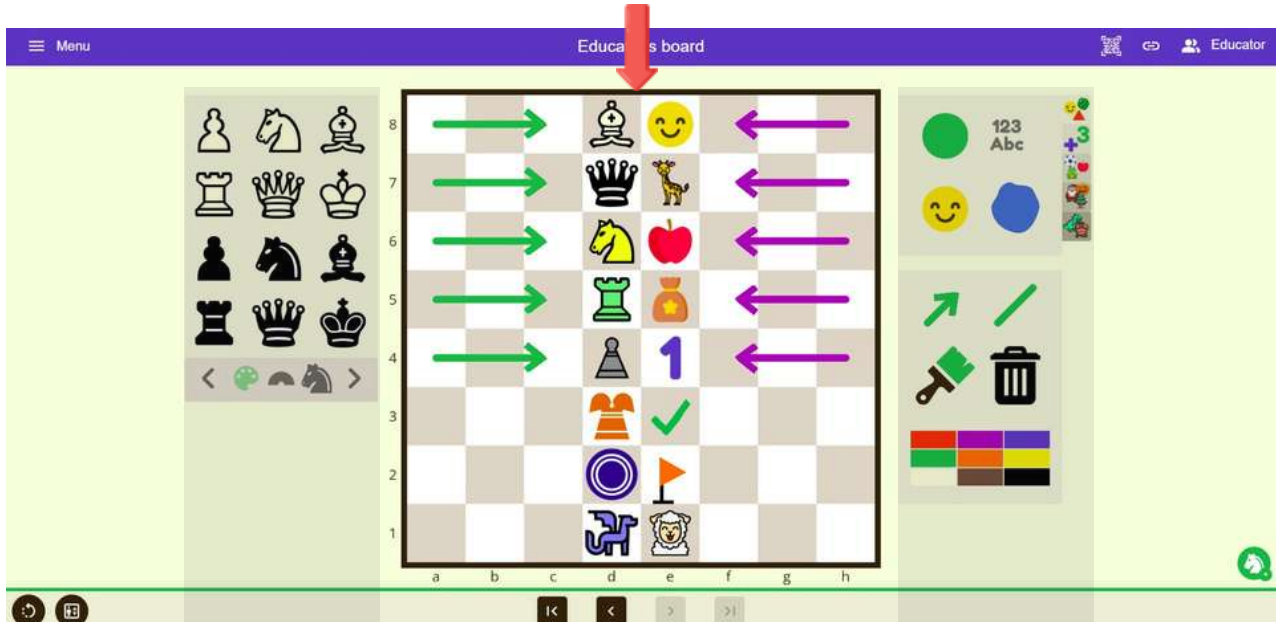
Pieces panel



Central Board

The central area of the interface is the interactive board, where all actions take place. This is where users place pieces, create positions and interact with all elements in real time.

Central board



Drag and Drop

All pieces and elements can be freely moved on the board using a simple drag-and-drop action. This intuitive interaction allows users to quickly set up positions and explore ideas.

- Click on a piece or element
- Drag it to the desired square
- Release to place it

Removing Elements

To remove an element from the board:

- Click and drag the item outside the board area
- Release it outside the grid

The element will automatically disappear.

Layer System

The board has five visual layers that allow multiple objects to occupy the same square. Some elements are placed on top of one another, while icons used as game pieces are captured by other game pieces.

1. Painted squares
2. Symbols and numbers
3. Counters
4. Game pieces
5. Marks such as ticks or crosses



History and Navigation

The board keeps track of all changes. This allows replaying positions step-by-step. Users can navigate through them using the arrow controls below the board. You can jump to any point in the game history by clicking the green line. If you edit the board at a specific point, the previous sequence is replaced with the new move(s).

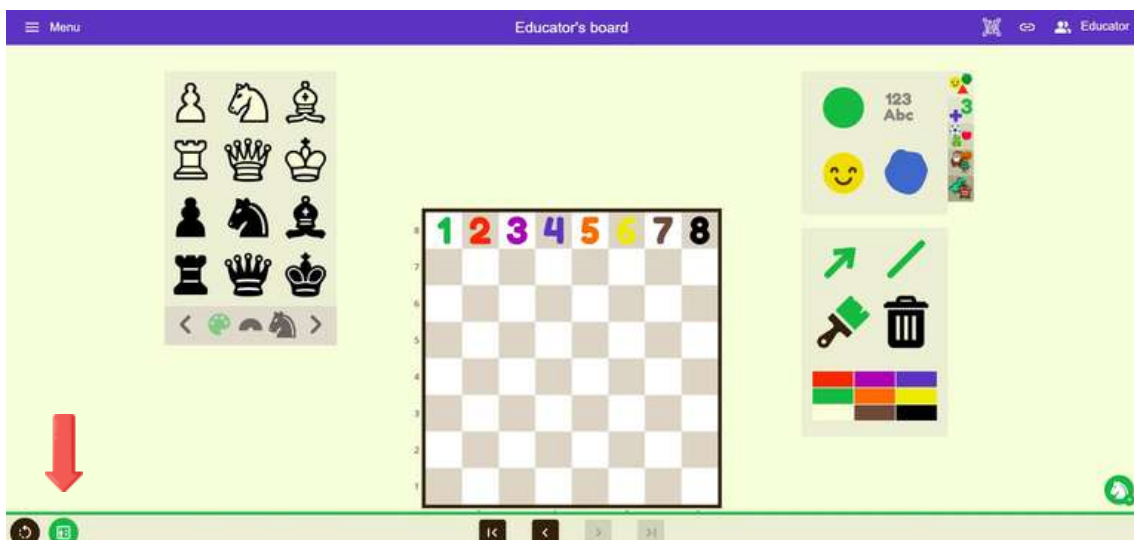


Functions include:

jump to the beginning - step backward - step forward - jump to the latest position

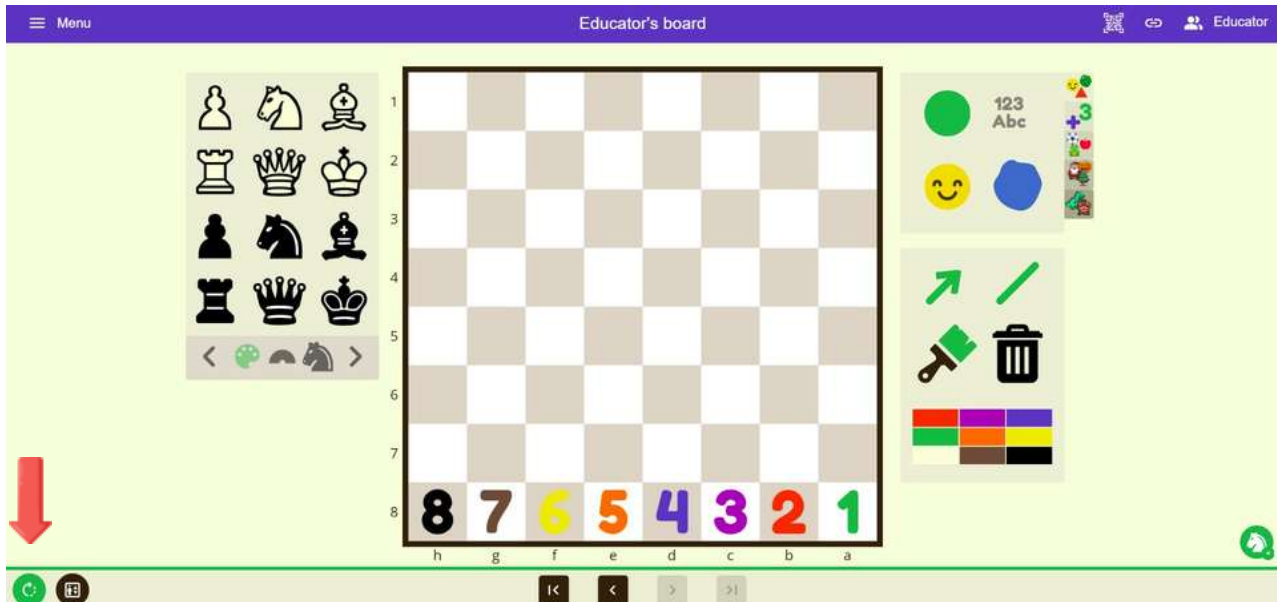
Board Size Adjustment

The board size can be reduced to make it more accessible for smaller learners. Decreasing the board size is used in classroom settings, where children may have difficulty reaching the top of the board, especially when using interactive whiteboards or large displays. By resizing the board, all areas remain within comfortable reach.



Board orientation (Flip Board)

Each participant can use the *Flip Board* function to change the board orientation on their own device. This action only affects their personal view and does not alter the board for other users.

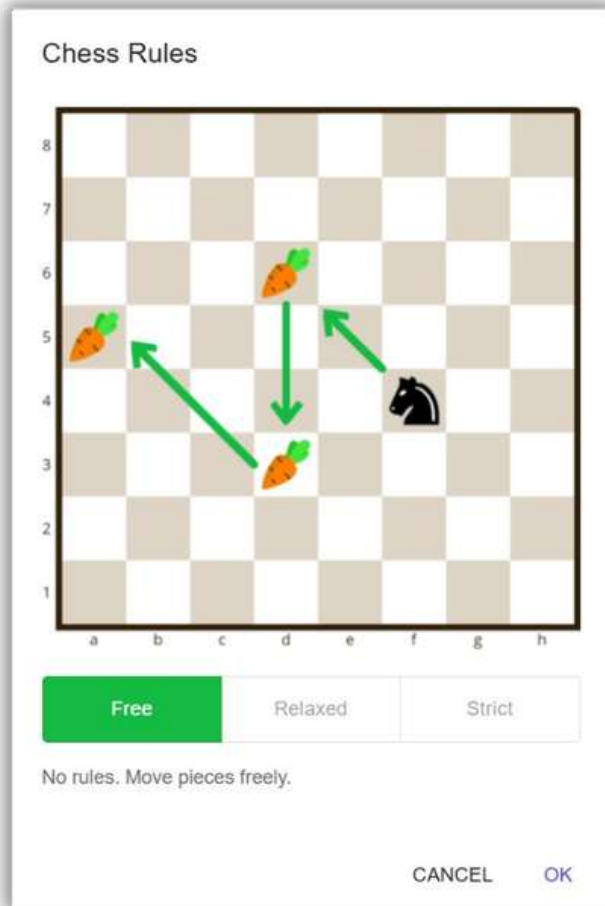


To set a default orientation for all participants, open the *Board Settings* from the *Menu* system and enable the desired board orientation before sharing the board. This ensures a consistent view for everyone joining the session.

Play mode

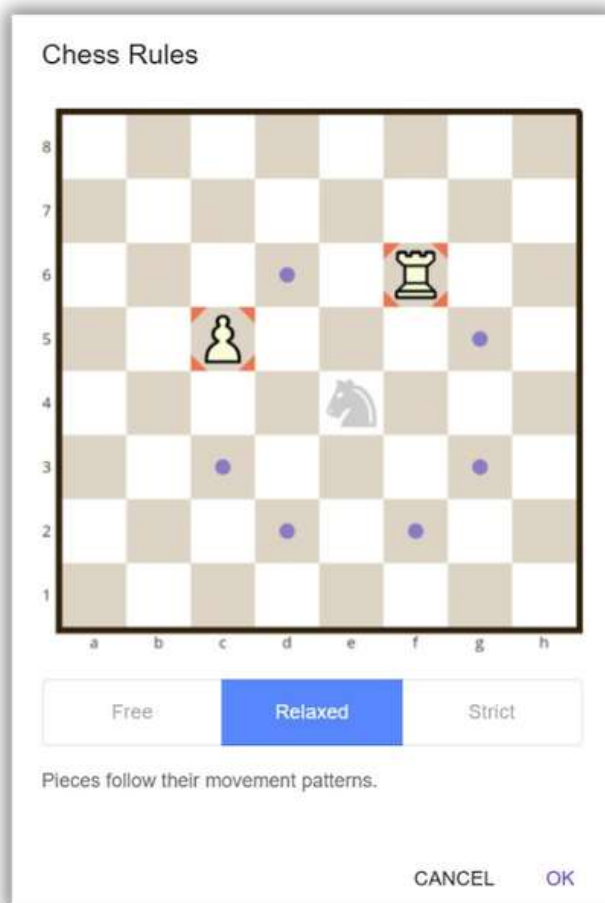
LogiqBoard offers three different play modes, **Free**, **Relaxed** and **Strict**, allowing you to adjust how strictly the rules are applied depending on your teaching and learning objective.





Free

No rules.
Move pieces and visual graphic elements freely.



Relaxed

Pieces follow their movement patterns. Visual and graphic elements can be used.



Chess Rules



Strict

In *Strict* mode, all standard chess rules are enforced. Only legal chess positions and chess moves are allowed.

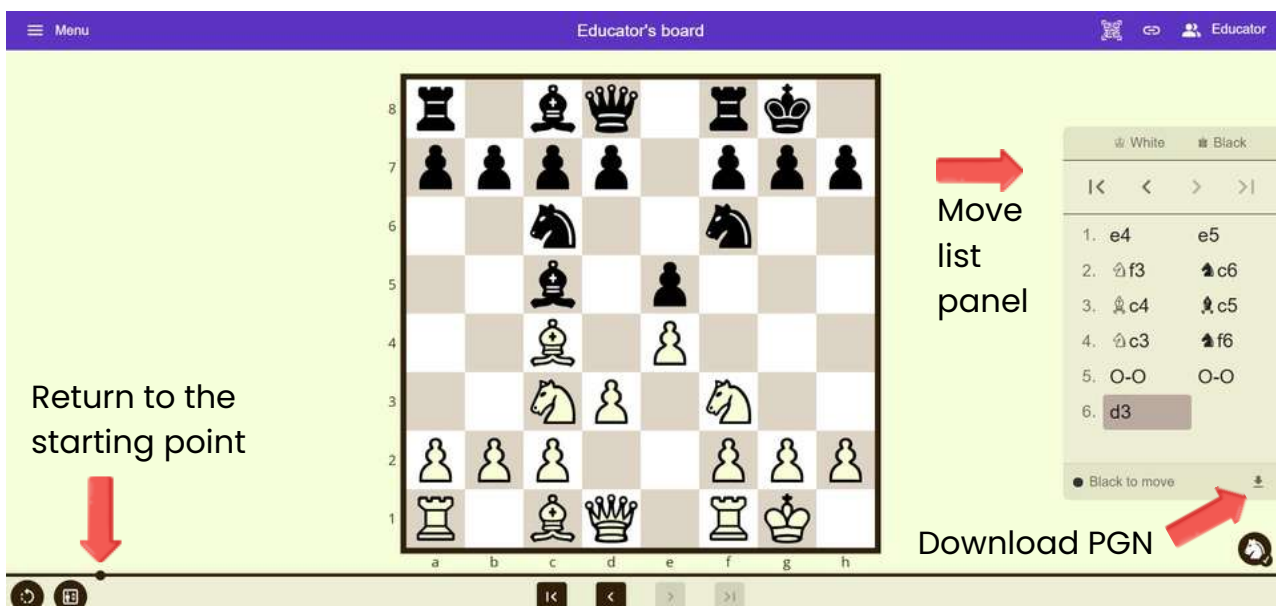
When Strict Mode is enabled, a move list panel appears, displaying the sequence of moves for both White and Black. Other graphics are removed from the board.

Users can navigate through the game in two ways:

- Using the navigation arrows within the move list panel (right-hand side)
- Using the navigation controls located below the board

A marker (dot) appears on the timeline beneath the board, indicating the point at which Strict Mode (or any other mode) was activated.

Clicking this marker returns the board to that position, allowing users to revisit the starting point of the recorded sequence.



Visual Annotations in Strict Mode

Although the standard LogiqBoard graphical tools are not available in Strict Mode, you can still temporarily highlight squares and draw arrows, similar to functionality found in other chess programs.



These temporary annotations are:

highlight in green	right-click
highlight in red	control & right-click
draw arrow in green	right-click & drag mouse
draw arrow in red	control & right-click & drag mouse



Navigation on the Timeline



The board was created in *Free* mode.



The board was changed to *Relaxed* mode:

- pieces move as in chess
- visual and graphic elements can be used on the board



The board was changed to *Strict* mode:

- visual and graphic elements disappear
- chess rules apply
- starting point for the game



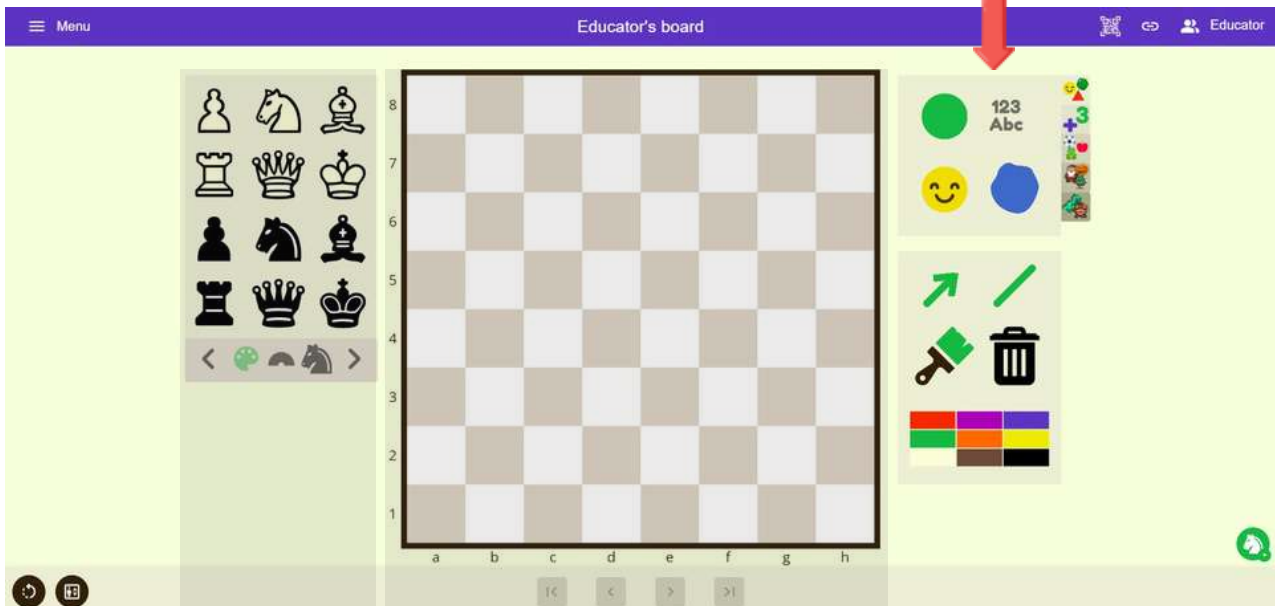
Moves were played and recorded on the *Move list panel*

- Clicking on the marker (dot) on the timeline returns the board to the starting point of the game

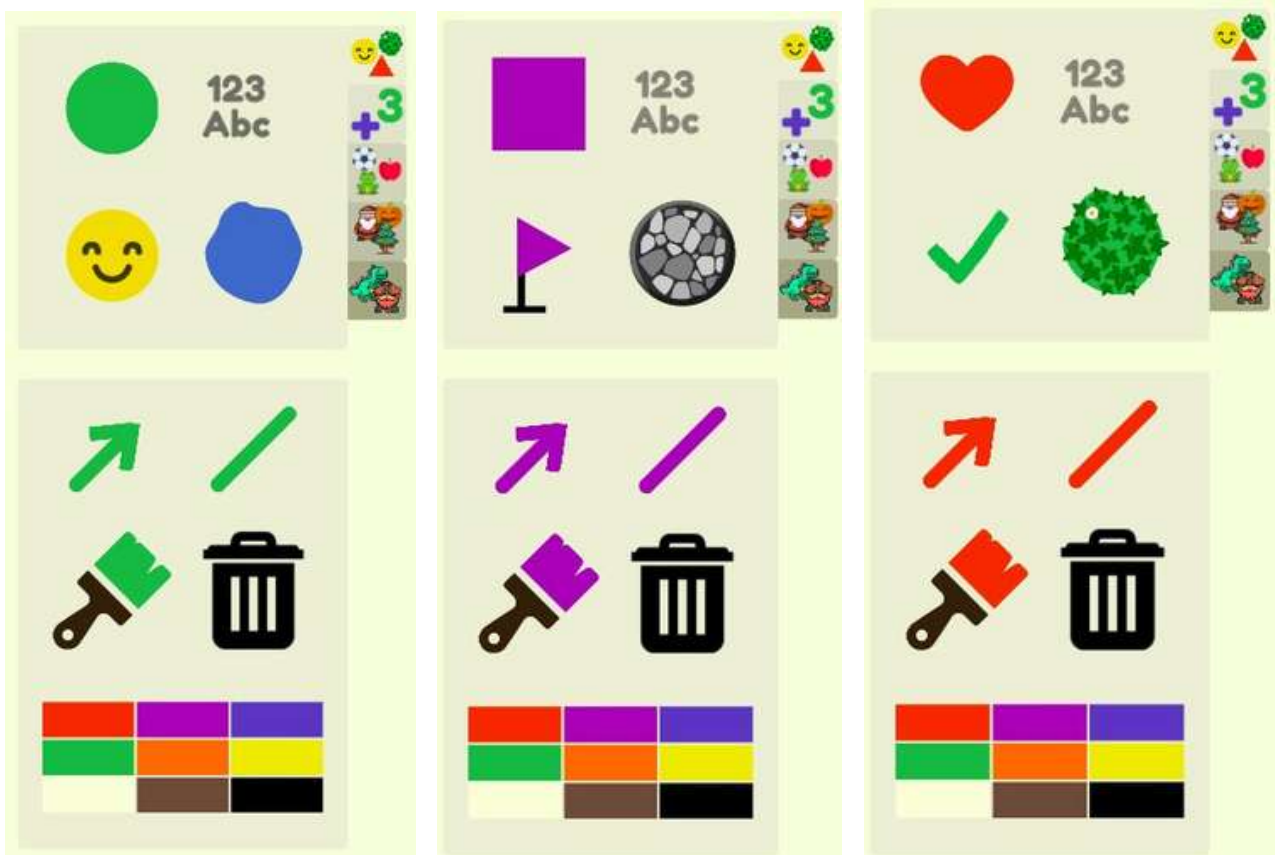


Tools panel

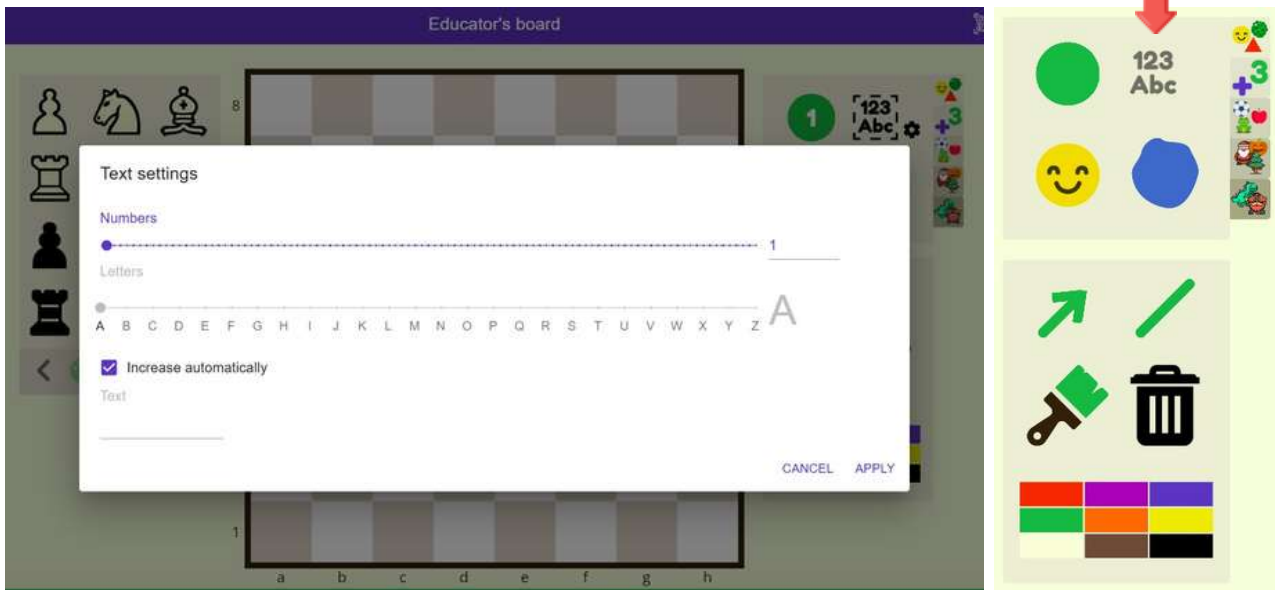
Tools panel



The Tools Panel contains all visual and graphical elements available for the board. It serves as your creative toolbox for creating engaging educational content and communicating ideas visually. Access tools such as shapes & colours, letters & numbers, lines & arrows, symbols & characters.



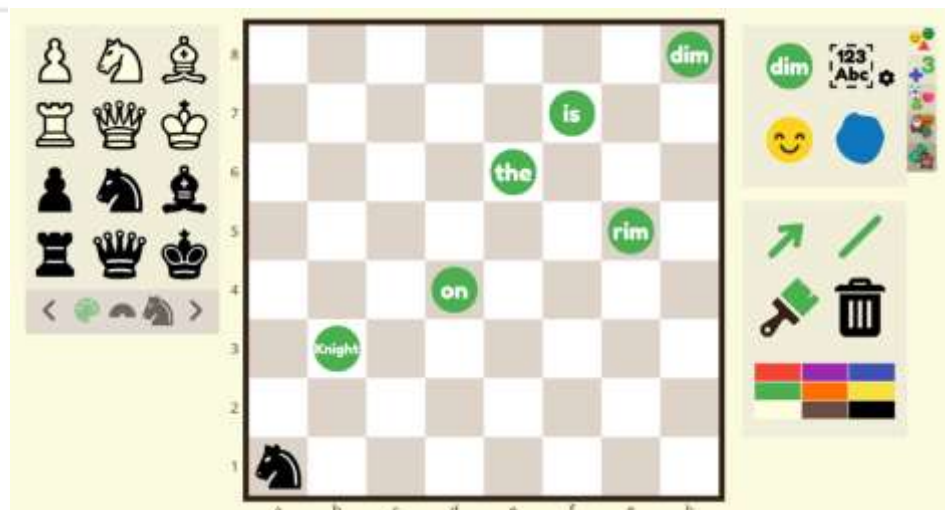
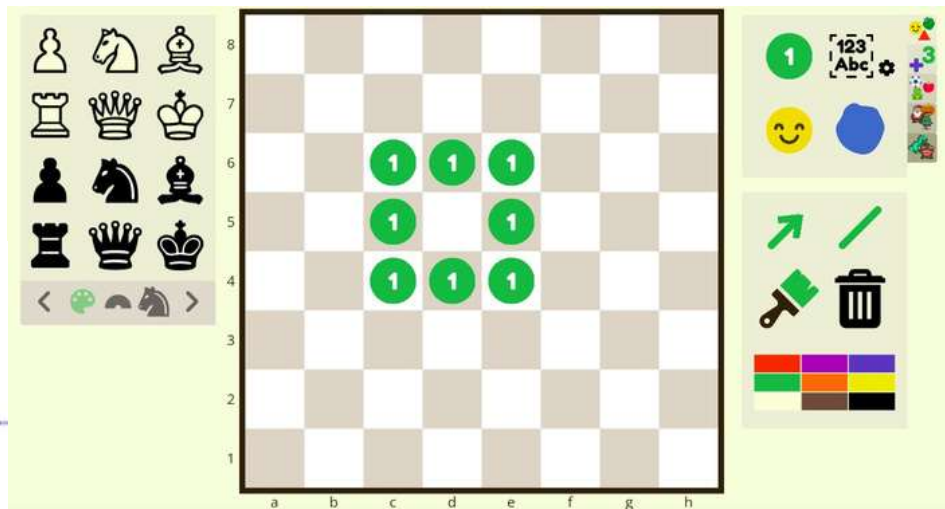
Numbers, letters and text



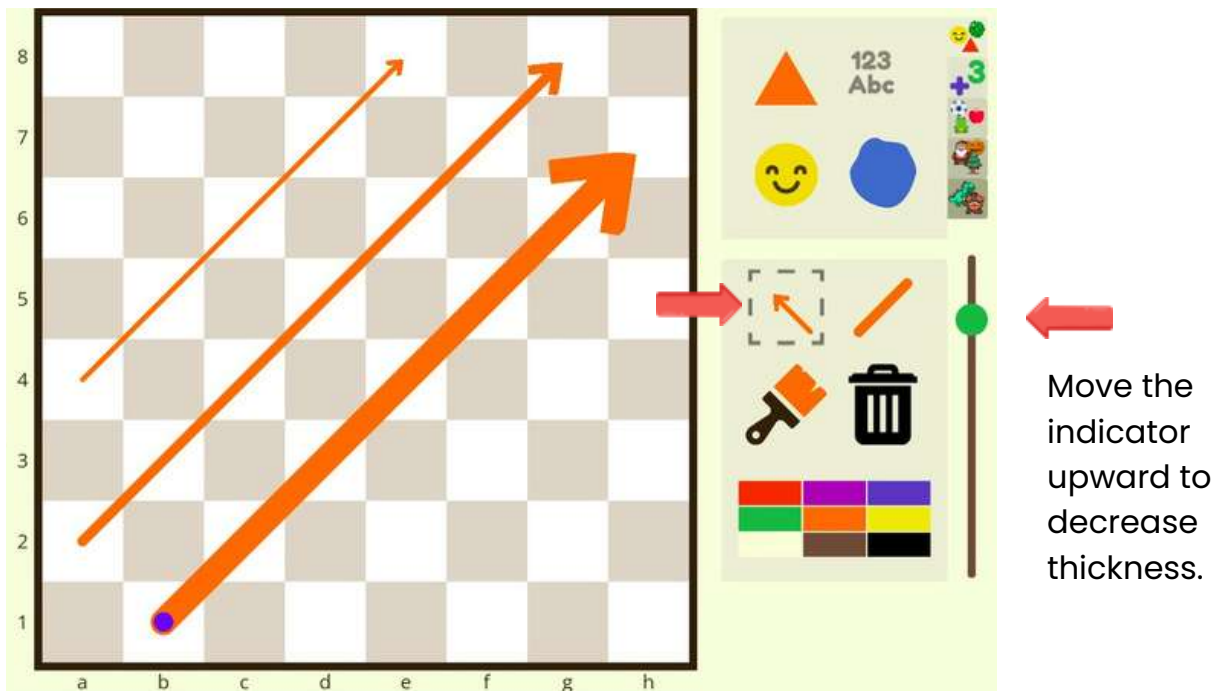
By clicking the "123 Abc" icon, you can enable the numbers, letters and text feature. This tool lets you place letters, numbers or short text elements on the board. These elements will appear using the selected shape and colour settings.

Enable and disable the "123Abc" feature with a single click.

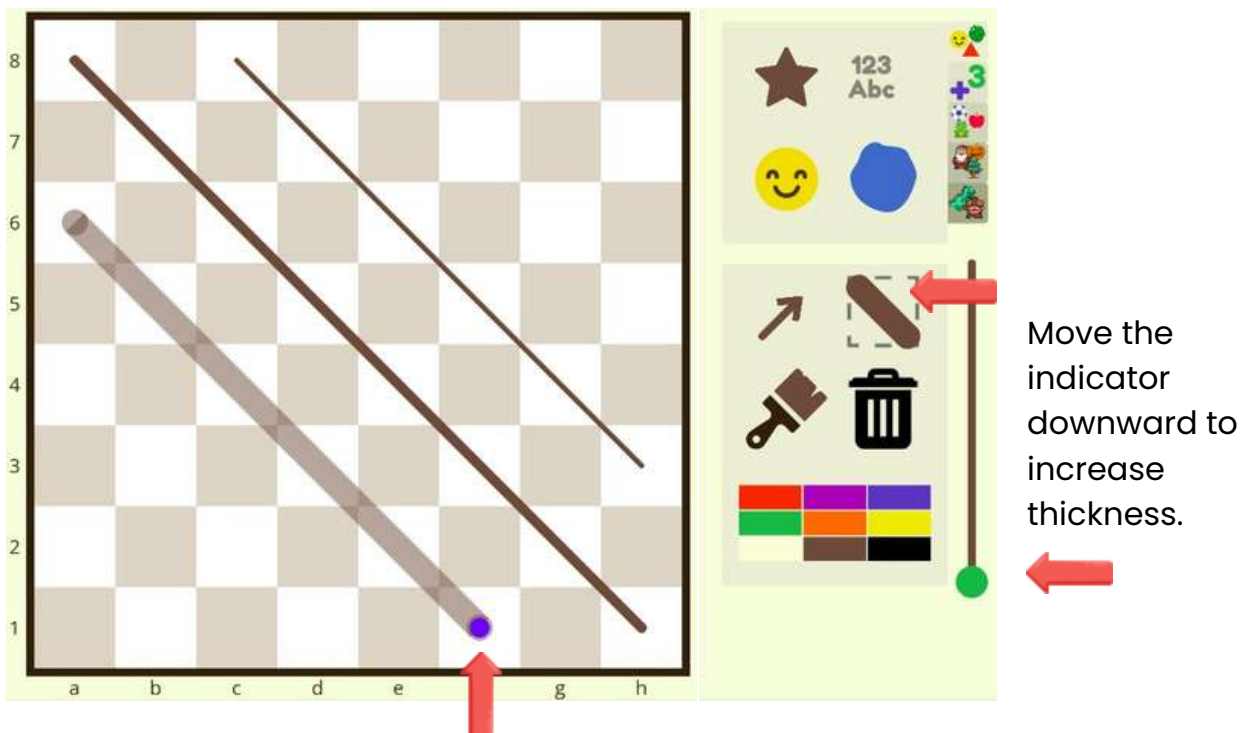
Text settings



Arrows & Lines



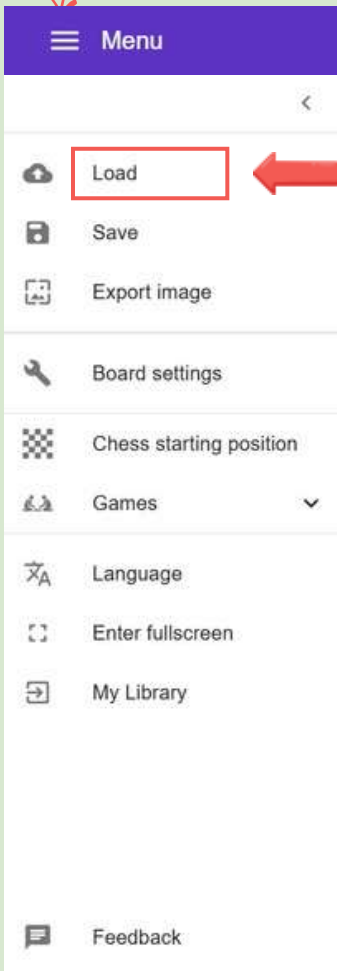
The arrow and line features can be enabled or disabled with a single click. When a square outline appears around the icon, the tool is active and ready to draw arrows or lines on the board. Click the icon once to activate the tool, then click it again to deactivate it. The thickness of arrows and lines can also be adjusted using the scale on the right-hand side of the panel.



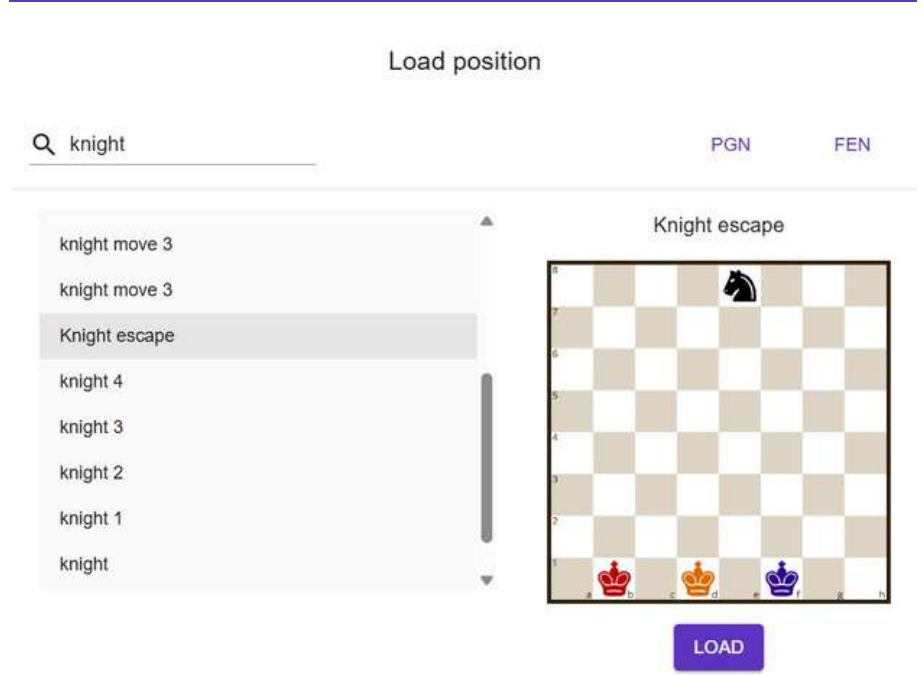
To remove an arrow or line from the board, first deactivate it, then click anywhere on the arrow or line you want to remove. A blue dot will appear. Click the blue dot to delete the selected element.



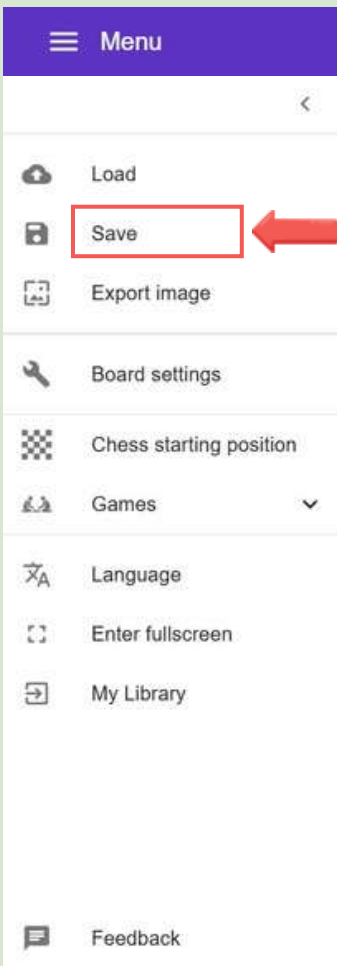
Click here to open Menu



Load position



You can load previously saved positions from your LogiqBoard Library or upload a PGN game or FEN position from an external source. To locate positions in your LogiqBoard Library, you can search by name or by date of creation. If you have saved positions in folders, open the relevant folder first to find the position you want.



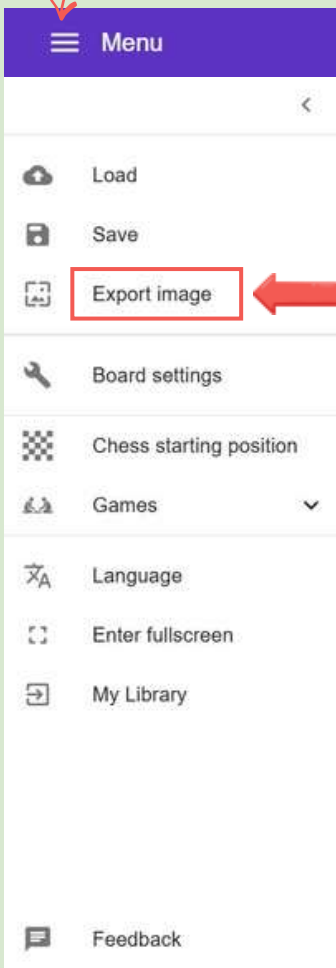
Save position



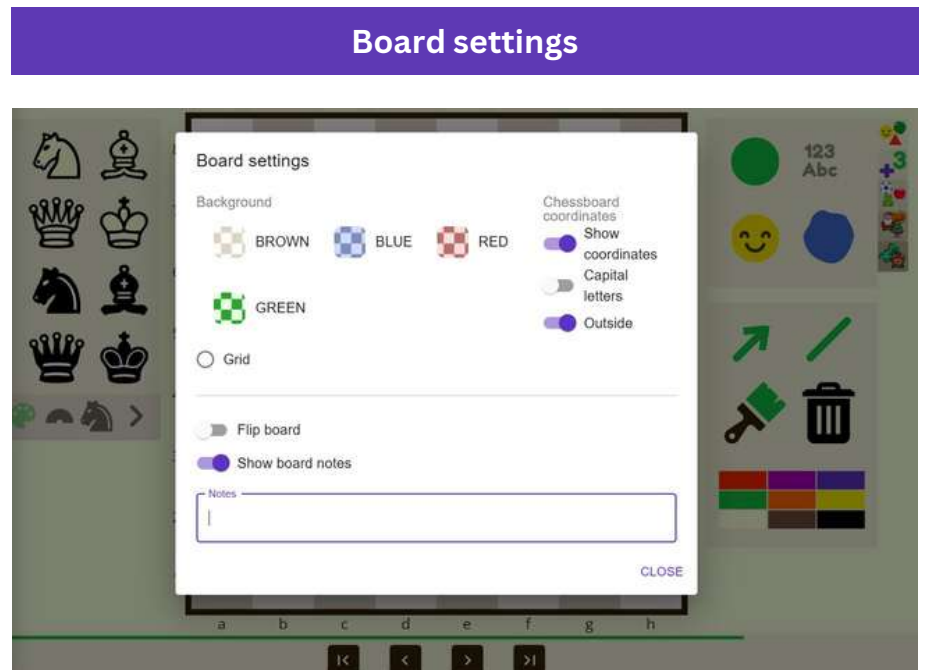
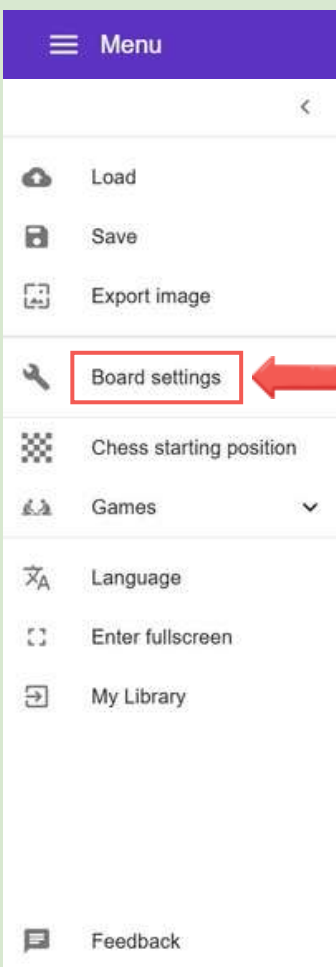
Save the positions to your Logiqboard Library and assign them a name. Saved positions can be easily accessed later, allowing you to reuse materials across lessons. Multiple positions can share the same name.



Click here to open Menu

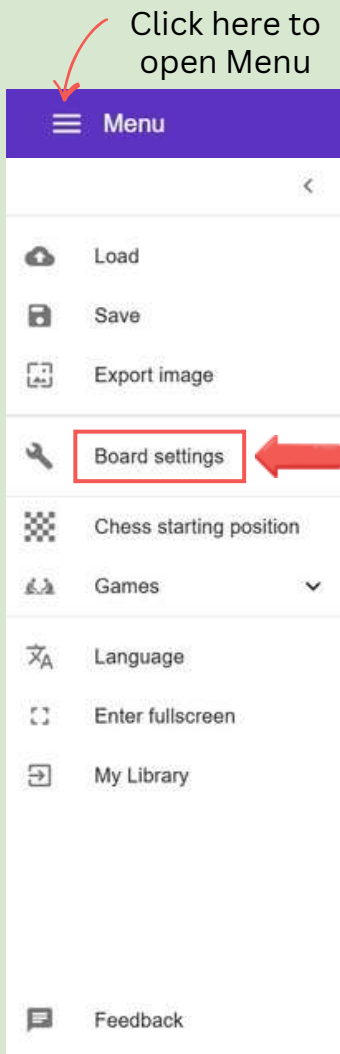


You can export your board as a PNG image file for use in presentations, worksheets or teaching materials. The image will be downloaded to your computer and stored in your Downloads folder, typically with the default filename “chessboard”. You can then rename the file as needed for easier organisation and future use.



LogiqBoard offers several display options that let you customise the board's appearance to suit your teaching needs. Available settings include: Background Colours, Coordinates, Grid, Flip Board, Board Notes

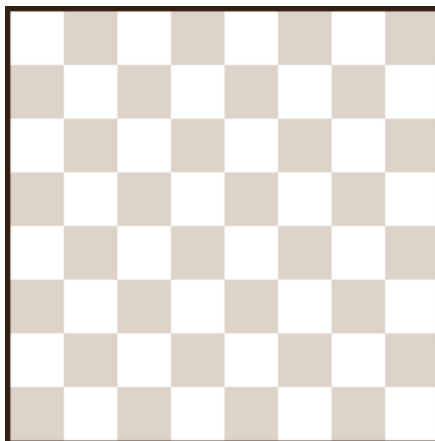




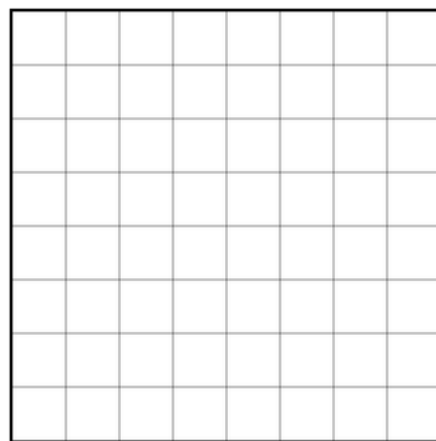
Board settings

Before sharing, saving or exporting your board, you can customise its appearance using the available layout options. These settings determine how the board will be displayed to others or in the final output.

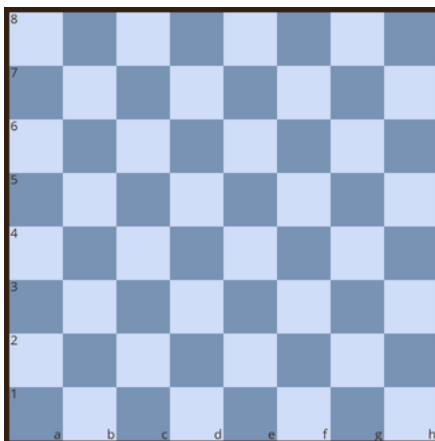
Board without coordinates



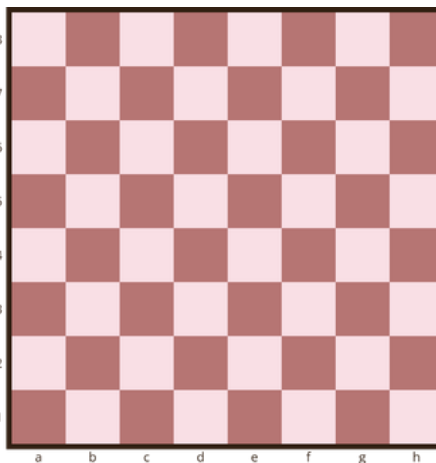
Grid without coordinates



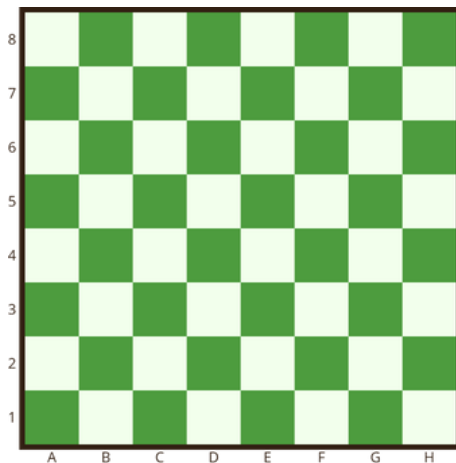
Coordinates inside



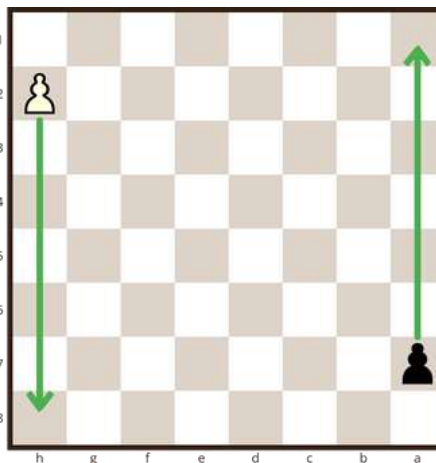
Coordinates outside



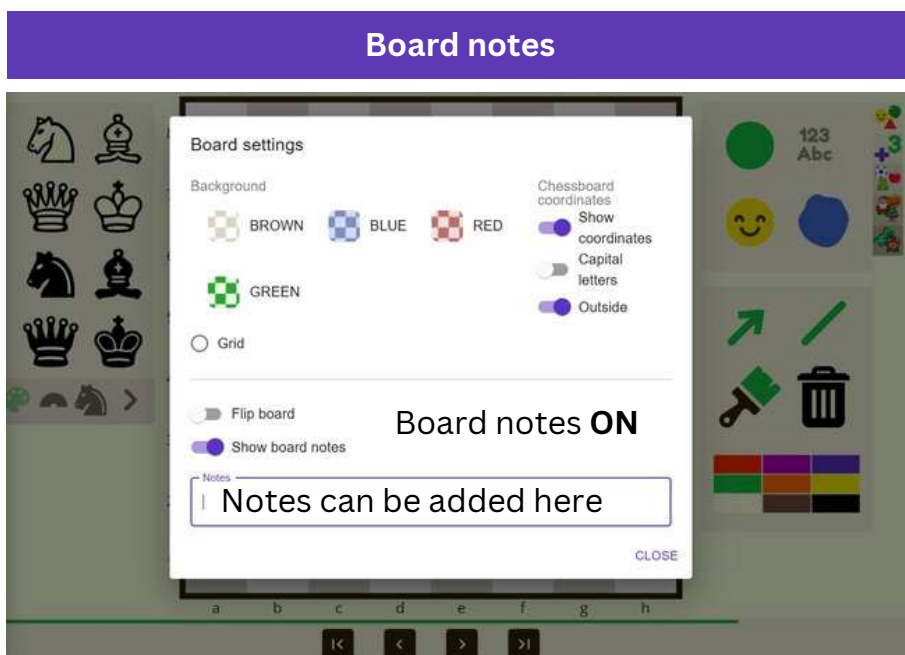
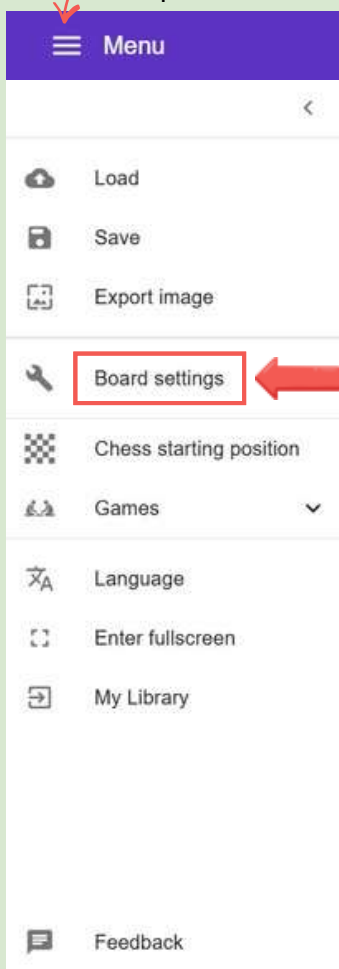
Coordinates in CAPITAL



Flip the board



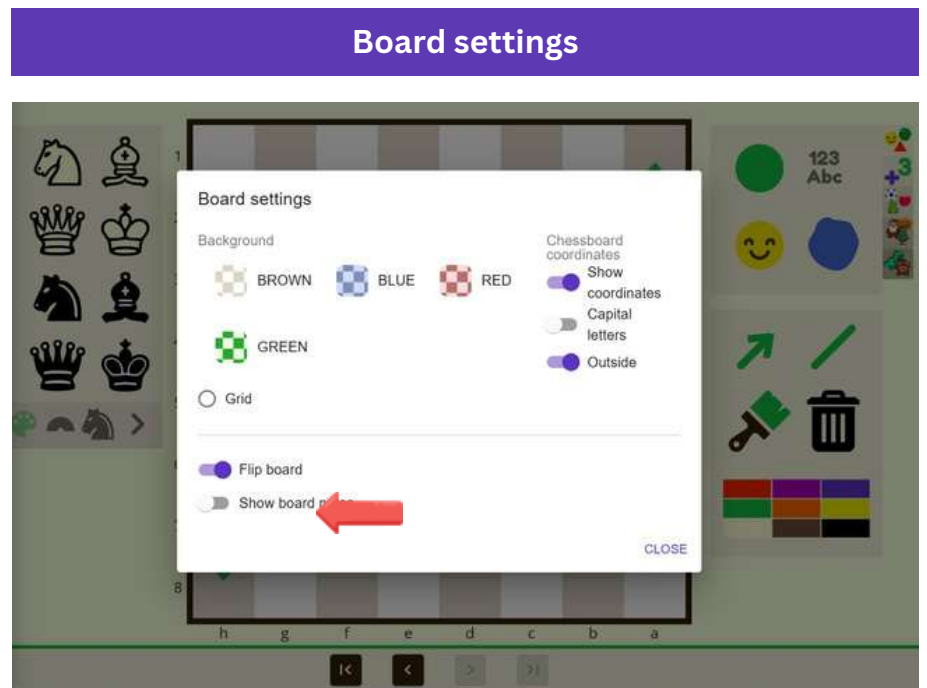
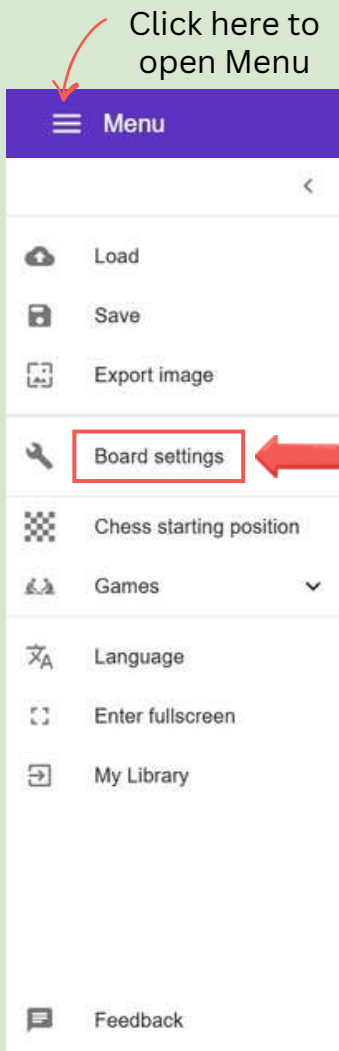
Click here to open Menu



Board Notes allow you to add written instructions directly alongside the board, providing context for activities, games, or puzzles. They can be used to:

- explain the rules of a game or mini-game
- describe the objective of a task
- give instructions for solving a position
- provide hints or guiding questions






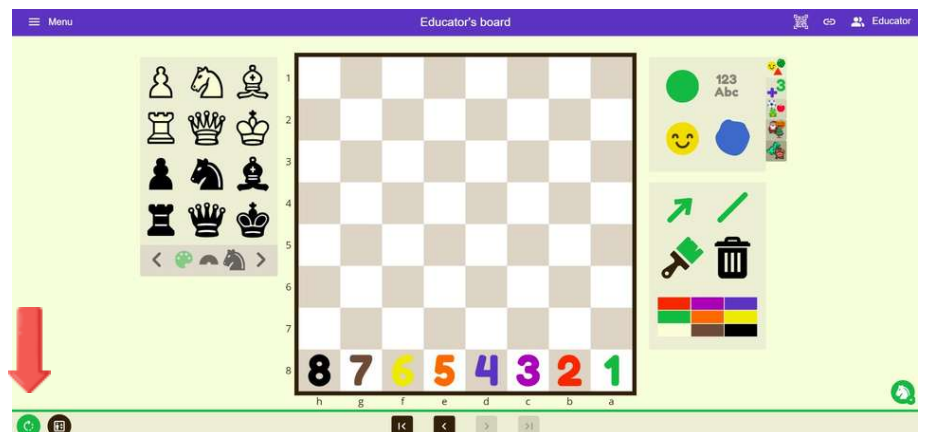
Flip Board

If you want all participants to view the board with the same orientation, you must set this using the *Flip Board* option here in the layout settings before sharing, saving or exporting the board.

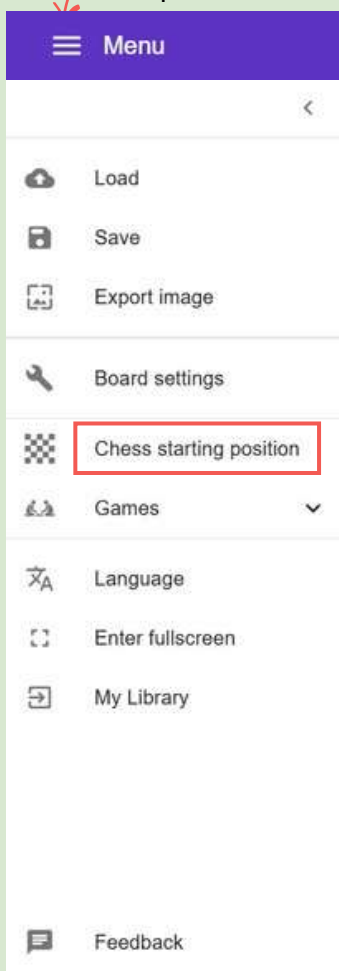
This defines the default orientation for everyone joining the session.

Participants can still adjust the board orientation individually on their own devices using the  control located in the bottom-left corner. This change affects only their personal view.

Board orientation



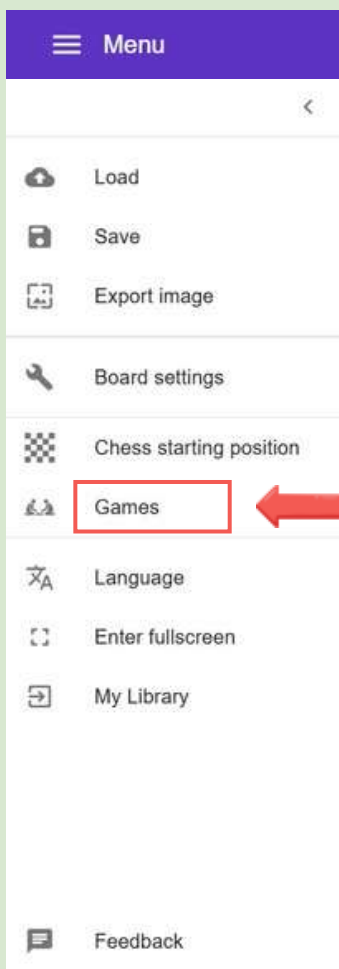
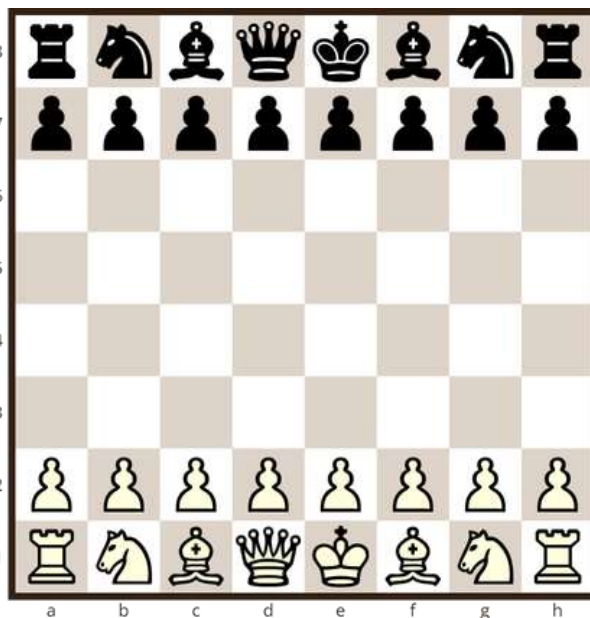
Click here to open Menu



Chess starting position

Reset to Starting Position

The standard starting position can be restored instantly with a single click. This feature lets you quickly restore the board to its original setup.

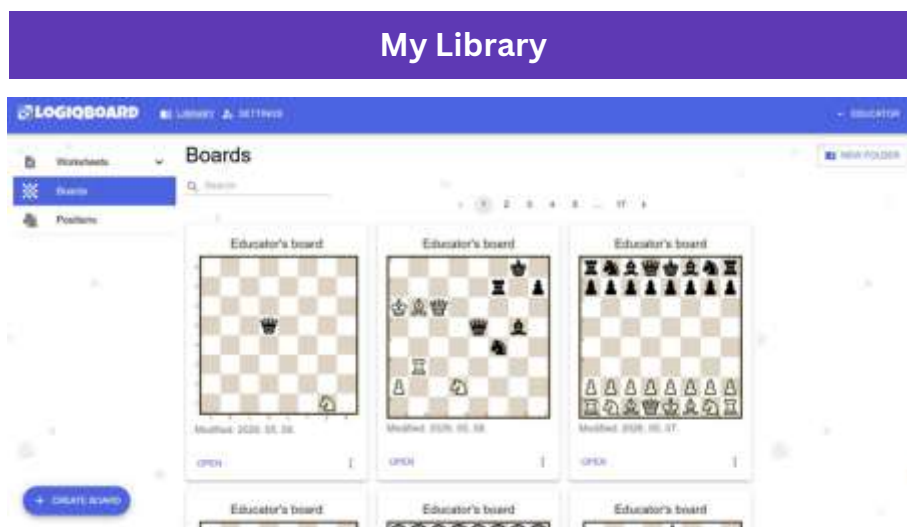
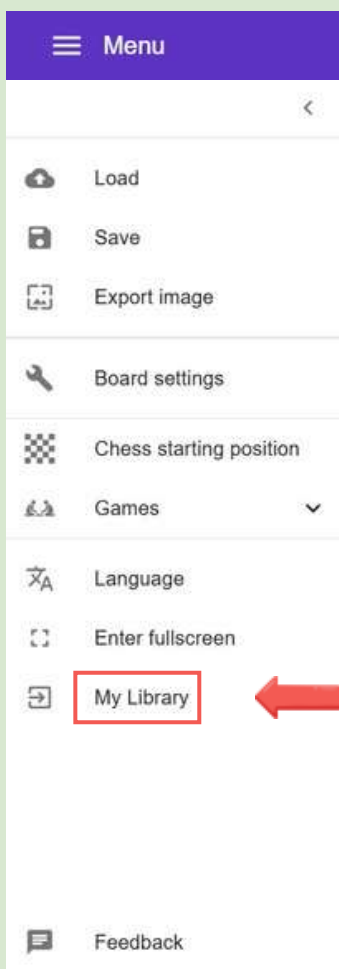


Games



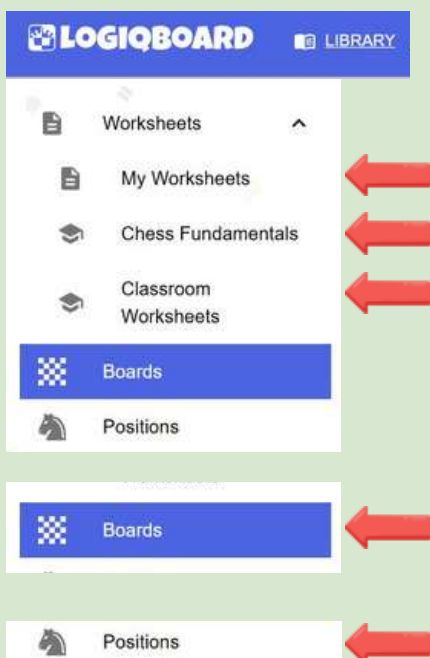
LogiqBoard includes a collection of games that can be played on the chessboard.





All positions you save are stored in your LogiqBoard Library. This centralised storage lets you easily access, organise, and reuse your boards and saved positions. Each board is automatically saved in the cloud and has its own unique link, allowing you to share it with others.

Both boards and positions can be organised in folders.



Shareable, printable Worksheets

Create and store your own Worksheets.

Organise them in folders.

64 Worksheets to support chess instruction

Additional worksheets to be used in the classroom

Every Board and Worksheet has its own link and QR code to be shared with others

What is a Board?

- Boards are working formats

What is a Position?

- A single state of the Board is called a Position
- Positions are saved in the Library and are used to create LogiqBoard Worksheets and to load onto boards.



Thank you for using



We hope this guide helps you create engaging learning experiences, where every board becomes a space for exploration, discussion, collaboration, and meaningful learning.



User Guide by
Rita Atkins & Brigitta Peszleg